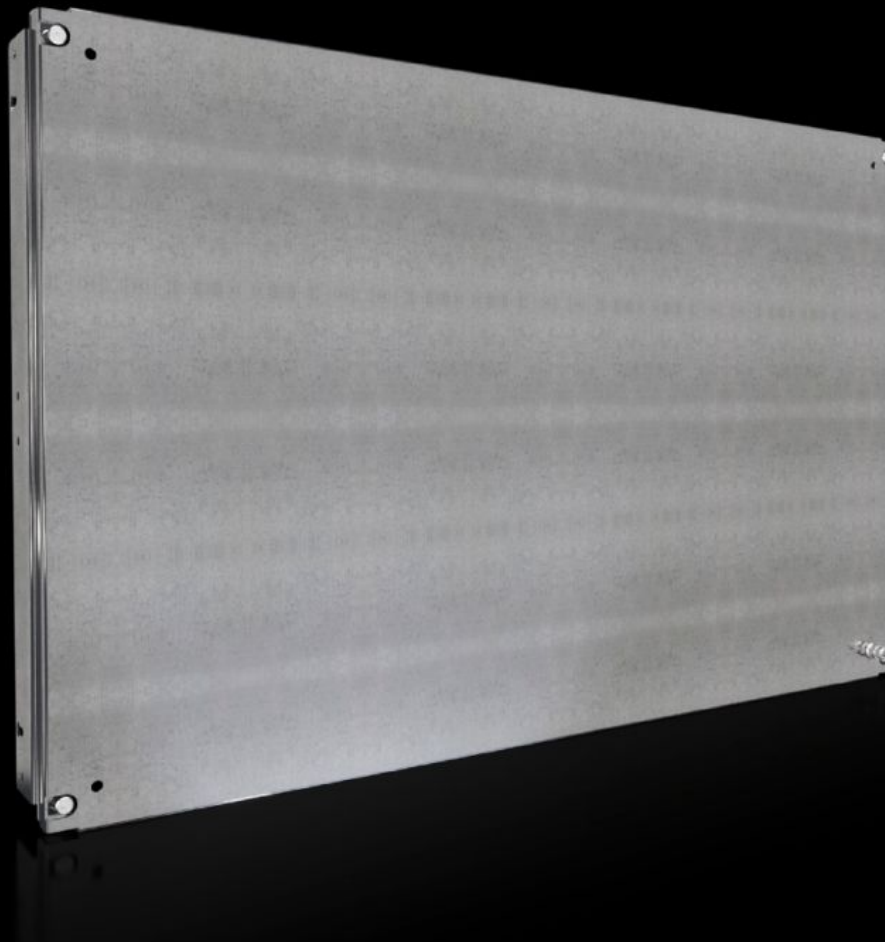


# Rittal – The System.

Faster – better – everywhere.



## SV 9683.606 Partial Mounting Panel

State: 4/26/2026 (Source: [rittal.com/us-en](http://rittal.com/us-en))

ENCLOSURES

POWER DISTRIBUTION

CLIMATE CONTROL

IT INFRASTRUCTURE

SOFTWARE & SERVICES

FRIEDHELM LOH GROUP



# SV 9683.606 - Partial Mounting Panel for compartment side panel

With or without cable entry, for direct attachment to compartment side panel.

## Features

Model No.	SV 9683.606
Version	Solid
Product description	For direct attachment to the compartment side panel for internal compartmentalization. Universal internal installation with switchgear and control devices. Creation of additional mounting levels. In combination with compartment dividers and side panels, internal partitioning in accordance with Form 1 to 4 is possible.
Material	Carbon steel, 2 mm
Surface finish	Zinc-plated
Supply includes	Angle brackets and assembly components
For compartment height	600 mm 23.6 "
Dimensions	Width: 902 mm Height: 593 mm Width: 35.5 " Height: 23.3 "
Suitable for	Width: = 1,000 mm Width: = 39.4 "
Packaging unit	1 pc(s).
Net weight	10 kg
Gross weight	11.5 kg
PCF/VE (cradle-to-gate)	43.8 kg CO2 eq (Cat B)
Information regarding the PCF class	Category B: PCF value (cradle-to-gate) calculated approximately on the basis of the product weight and self-declared
Customs tariff number	94039910

# Features

---

ETIM 9	EC000213
ECLASS 8.0	27400613
Product description	SV Partial mounting plate, WH: 902x593 mm, solid, for VX (W: 1000 mm)

---

# Approvals

---

Explanations	Declaration of conformity UK
--------------	------------------------------

---