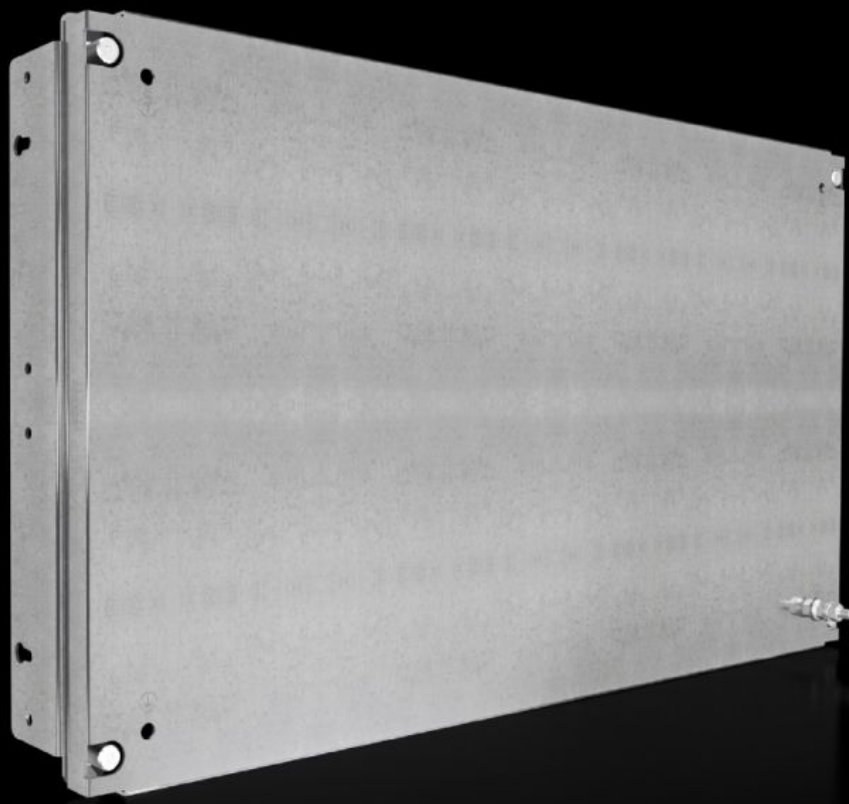


Rittal – The System.

Faster – better – everywhere.



SV 9683.684 Partial Mounting Panel

State: 8/24/2025 (Source: [rittal.com/us-en](https://www.rittal.com/us-en))

ENCLOSURES

POWER DISTRIBUTION

CLIMATE CONTROL

IT INFRASTRUCTURE

SOFTWARE & SERVICES

FRIEDHELM LOH GROUP



SV 9683.684 - Partial Mounting Panel for compartment side panel

With or without cable entry, for direct attachment to compartment side panel.

Features

Model No.	SV 9683.684
Version	Solid
Product description	For direct attachment to the compartment side panel for internal compartmentalization. Universal internal installation with switchgear and control devices. Creation of additional mounting levels. In combination with compartment dividers and side panels, internal partitioning in accordance with Form 1 to 4 is possible.
Material	Carbon steel, 2 mm
Surface finish	Zinc-plated
Supply includes	Angle brackets and assembly components
For compartment height	400 mm 15.7 "
Dimensions	Width: 702 mm Height: 393 mm Width: 27.6 " Height: 15.5 "
Suitable for	Width: = 800 mm Width: = 31.5 "
Packaging unit	1 pc(s).
Net weight	5.9
Gross weight	6.4
PCF/VE (cradle-to-gate)	24.4 kg CO2 eq (Cat B)
Information regarding the PCF class	Category B: PCF value (cradle-to-gate) calculated approximately on the basis of the product weight and self-declared
Customs tariff number	94039910

Features

EAN	4028177935129
ETIM 9	EC000213
ECLASS 8.0	27400613

Approvals

Explanations	Declaration of conformity UK
--------------	------------------------------