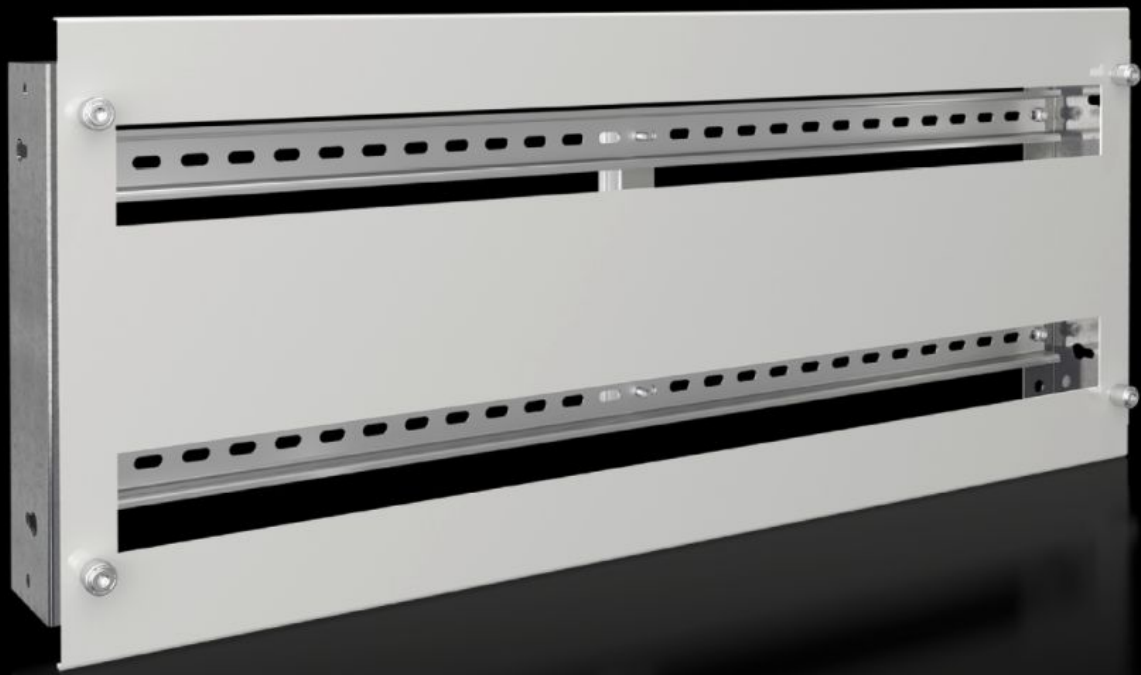


Rittal – The System.

Faster – better – everywhere.



SV 9683.783 Support Frame

State: 4/5/2026 (Source: rittal.com/us-en)

ENCLOSURES

POWER DISTRIBUTION

CLIMATE CONTROL

IT INFRASTRUCTURE

SOFTWARE & SERVICES

FRIEDHELM LOH GROUP



SV 9683.783 - Support Frame for DIN rail-mounted devices

Support frame kit suitable for DIN rail-mounted devices (e.g. MCBs).

Features

Model No.	SV 9683.783
Product description	Support frame kit suitable for DIN rail-mounted devices (e.g. MCBs). The support rails are fastened with two mounting brackets to the compartment side wall. The cover is fastened to the support frame with knurled screws. In combination with functional area dividers, partial mounting plates and side panel modules, internal compartmentalization in accordance with Form 2, 3, or 4 is possible.
Material	Support frame: Carbon steel, zinc-plated, 1.5 mm Cover: Carbon steel, spray finished, 1.5 mm
Supply includes	Support Rails 2 mounting bracket 1 cover with cut-out Assembly components
For compartment height	300 mm 11.8 "
Suitable for	Width: = 800 mm Width: = 31.5 "
No. of pitch units 17.5 mm	2 x 36
Packaging unit	1 pc(s).
Net weight	4 kg
Gross weight	4.3 kg
PCF/VE (cradle-to-gate)	16.4 kg CO2 eq (Cat B)
Information regarding the PCF class	Category B: PCF value (cradle-to-gate) calculated approximately on the basis of the product weight and self-declared
Customs tariff number	39269097

Features

ETIM 9	EC002270
ECLASS 8.0	27400613
Product description	SV Support frame, for DIN rail-mounted devices, 2 x 24 pitch units, WH: 700x295 mm, for VX (W: 800 mm)

Approvals

Explanations	Declaration of conformity UK
--------------	------------------------------
