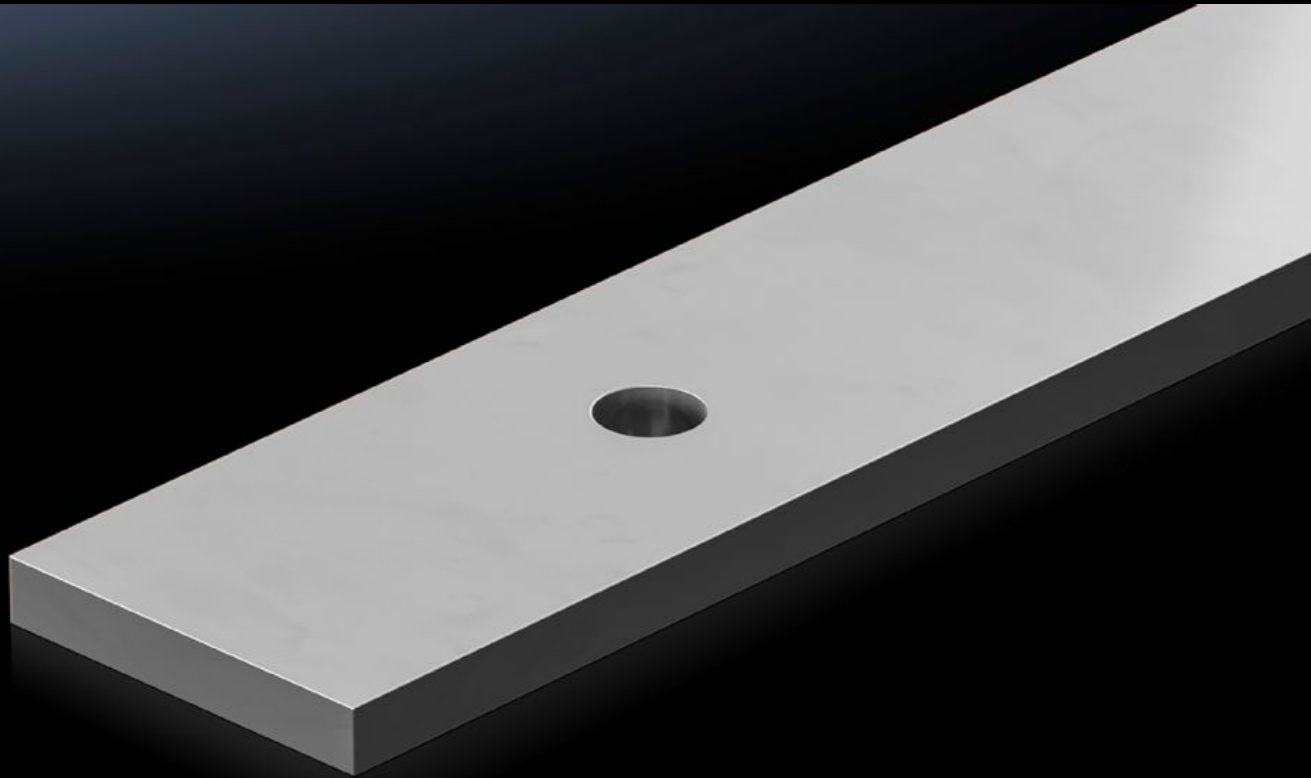


**Rittal – The System.**

Faster – better – everywhere.



**SV 9685.006**

**Busbar E-Cu, slotted, tin-plated**

State: 5/21/2026 (Source: [rittal.com/us-en](http://rittal.com/us-en))

ENCLOSURES

POWER DISTRIBUTION

CLIMATE CONTROL

IT INFRASTRUCTURE

SOFTWARE & SERVICES

FRIEDHELM LOH GROUP



# SV 9685.006 - Busbar E-Cu, slotted, tin-plated

## Features

Model No.	SV 9685.006
Product description	Busbar with integrated holes.
Material	E-Cu, tin-plated
Cross-section	50 mm x 10 mm 1.97 " x 0.39 "
Hole diameter	11.5 mm
Dimensions	Width: 50 mm Height: 10 mm Length: 585 mm Width: 1.97 " Height: 0.39 " Length: 23 "
Packaging unit	1 pc(s).
Net weight	2.5 kg
Gross weight	2.608 kg
Copper weight (kg per piece)	2.6
Customs tariff number	74071000
Product description	SV busbar E-Cu tin-plated, with integrated holes, WH: 50 x 10 mm, L: 585 mm

## Approvals

Approvals	UL + C-UL (listed)
-----------	--------------------