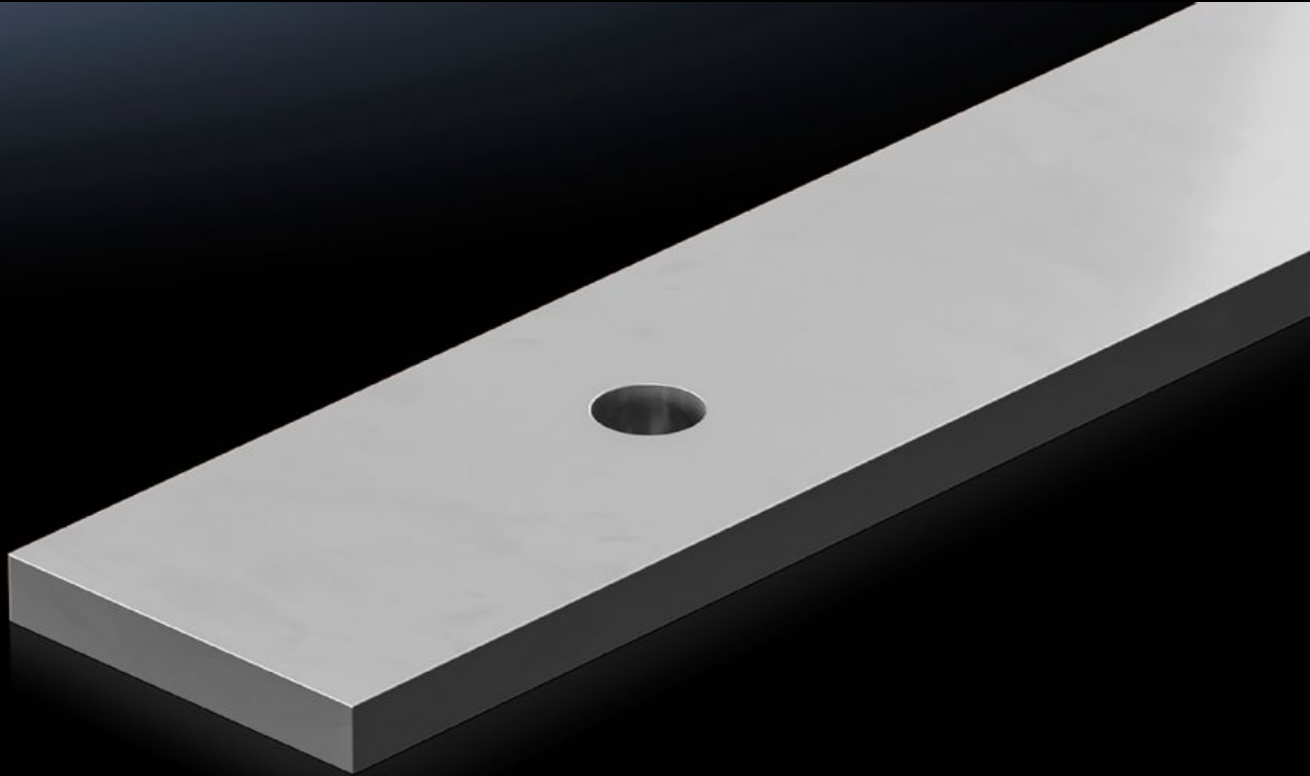


Rittal – The System.

Faster – better – everywhere.



SV 9685.012

Busbar E-Cu, slotted, tin-plated

State: 4/17/2026 (Source: rittal.com/us-en)

ENCLOSURES

POWER DISTRIBUTION

CLIMATE CONTROL

IT INFRASTRUCTURE

SOFTWARE & SERVICES

FRIEDHELM LOH GROUP



SV 9685.012 - Busbar E-Cu, slotted, tin-plated

Features

Model No.	SV 9685.012
Product description	Busbar with integrated holes.
Material	E-Cu, tin-plated
Cross-section	50 mm x 10 mm 1.97 " x 0.39 "
Hole diameter	11.5 mm
Dimensions	Width: 50 mm Height: 10 mm Length: 1,185 mm Width: 1.97 " Height: 0.39 " Length: 46.7 "
Packaging unit	1 pc(s).
Net weight	5.3 kg
Gross weight	5.307 kg
Copper weight (kg per piece)	5.28
Customs tariff number	74071000
Product description	SV busbar E-Cu tin-plated, with integrated holes, WH: 50 x 10 mm, L: 1185 mm

Approvals

Approvals	UL + C-UL (listed)
-----------	--------------------