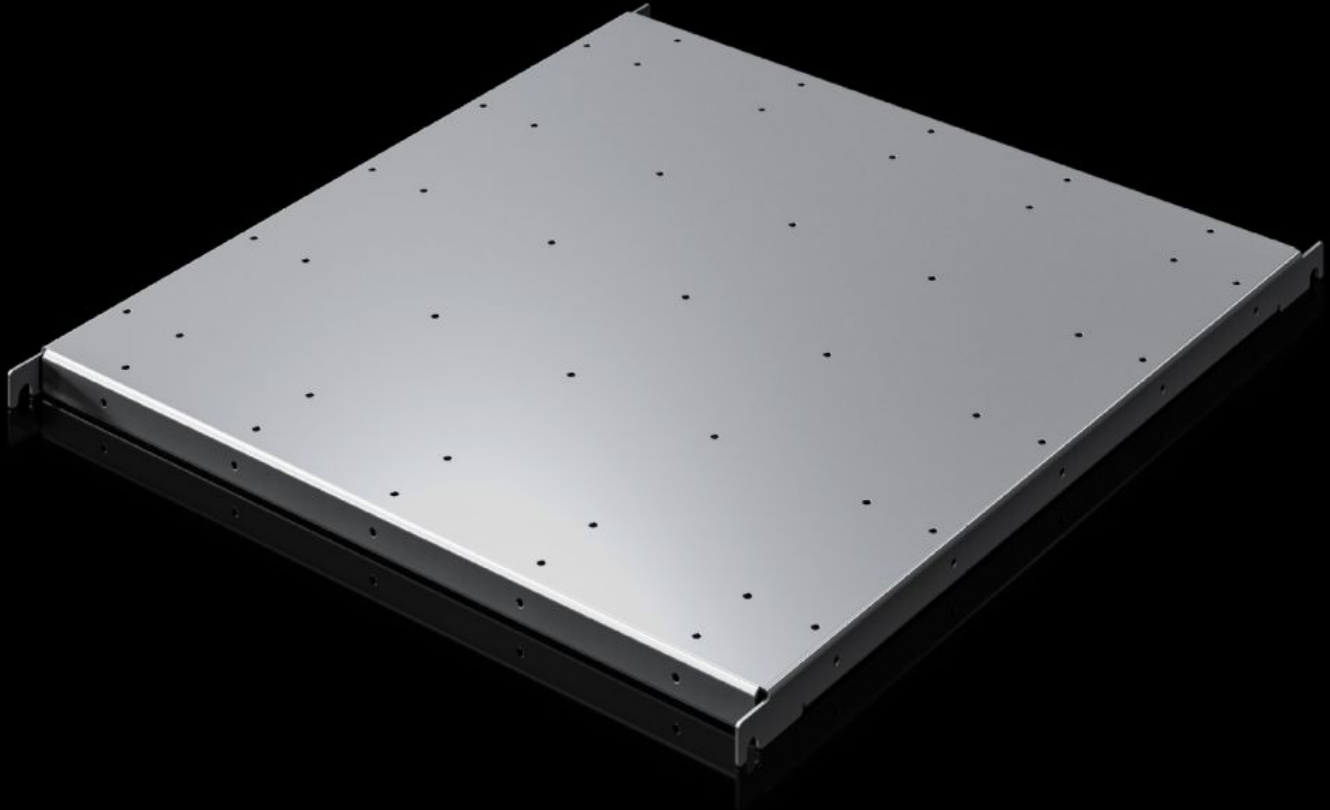


Rittal – The System.

Faster – better – everywhere.



SV 9692.020

Component Shelf, Heavy Duty

State: 4/3/2026 (Source: rittal.com/us-en)

ENCLOSURES

POWER DISTRIBUTION

CLIMATE CONTROL

IT INFRASTRUCTURE

SOFTWARE & SERVICES

FRIEDHELM LOH GROUP



SV 9692.020 - Component Shelf, Heavy Duty VX ESS

For accommodating e.g. block batteries.

Features

Model No.	SV 9692.020
Material	Carbon steel, zinc-plated
Supply includes	Assembly components
Load capacity static	200 kg 2,000 N 440.9 lb.
Support area	Width: 509 mm Depth: 514 mm Width: 20 " Depth: 20.2 "
Suitable for	Width: 600 mm Depth: 600 mm Width: 23.6 " Depth: 23.6 "
Packaging unit	1 pc(s).
Net weight	7 kg
Gross weight	7.176 kg
PCF/VE (cradle-to-gate)	17.83 kg CO2 eq (Cat B)
Information regarding the PCF class	Category B: PCF value (cradle-to-gate) calculated approximately on the basis of the product weight and self-declared
Customs tariff number	94039910
Product description	VX ESS component shelf, heavy duty, WD: 600x600 mm