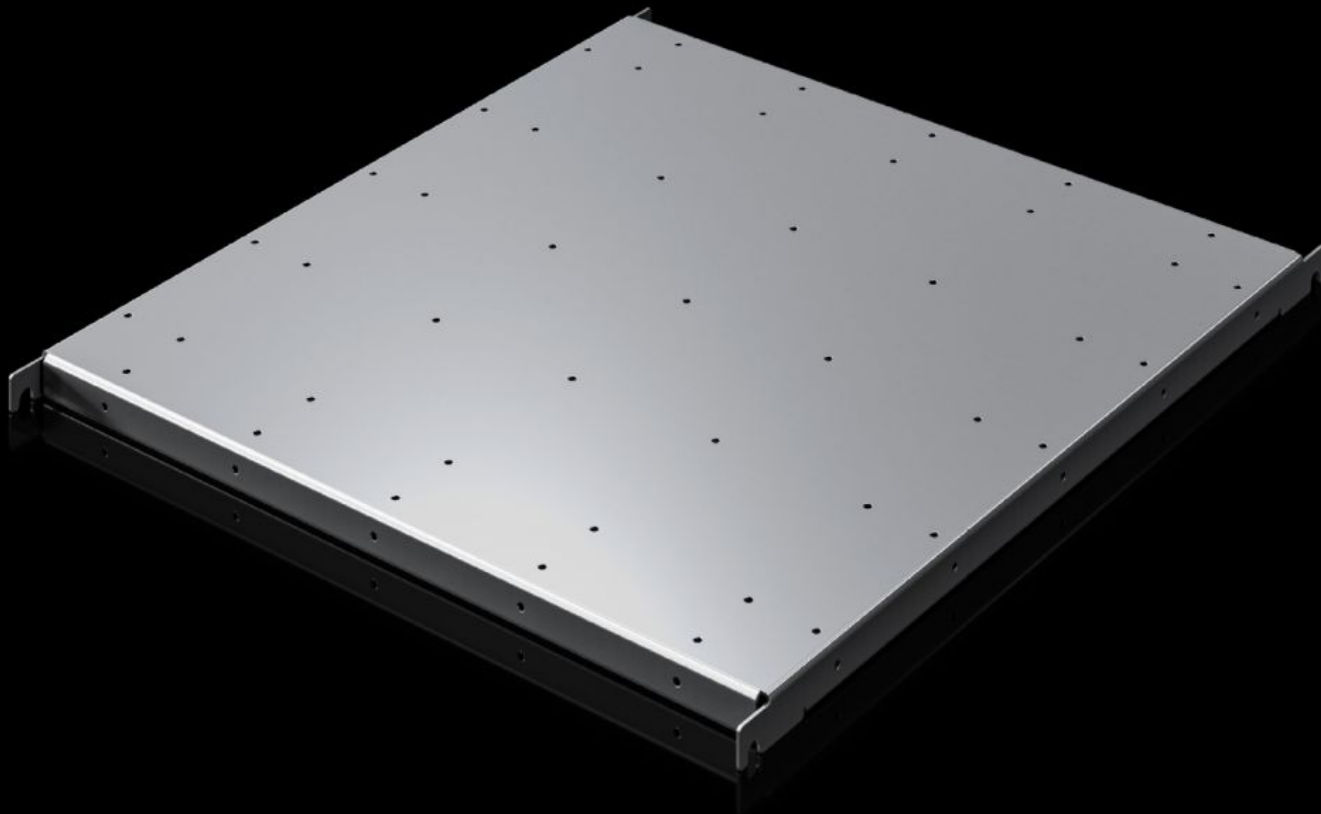


**Rittal – The System.**

Faster – better – everywhere.



**SV 9692.021**

**Component Shelf, Heavy Duty**

State: 12/9/2025 (Source: [rittal.com/us-en](https://www.rittal.com/us-en))

ENCLOSURES

POWER DISTRIBUTION

CLIMATE CONTROL

IT INFRASTRUCTURE

SOFTWARE & SERVICES

FRIEDHELM LOH GROUP



# SV 9692.021 - Component Shelf, Heavy Duty VX ESS

For accommodating e.g. block batteries.

## Features

Model No.	SV 9692.021
Material	Carbon steel, zinc-plated
Supply includes	Assembly components
Load capacity static	200 kg 2,000 N 440.9 lb.
Support area	Width: 509 mm Depth: 714 mm Width: 20 " Depth: 28.1 "
Suitable for	Width: 600 mm Depth: 800 mm Width: 23.6 " Depth: 31.5 "
Packaging unit	1 pc(s).
Net weight	9.1
Gross weight	9.34
PCF/VE (cradle-to-gate)	24.08 kg CO2 eq (Cat B)
Information regarding the PCF class	Category B: PCF value (cradle-to-gate) calculated approximately on the basis of the product weight and self-declared
Customs tariff number	94039910
EAN	4028177045965