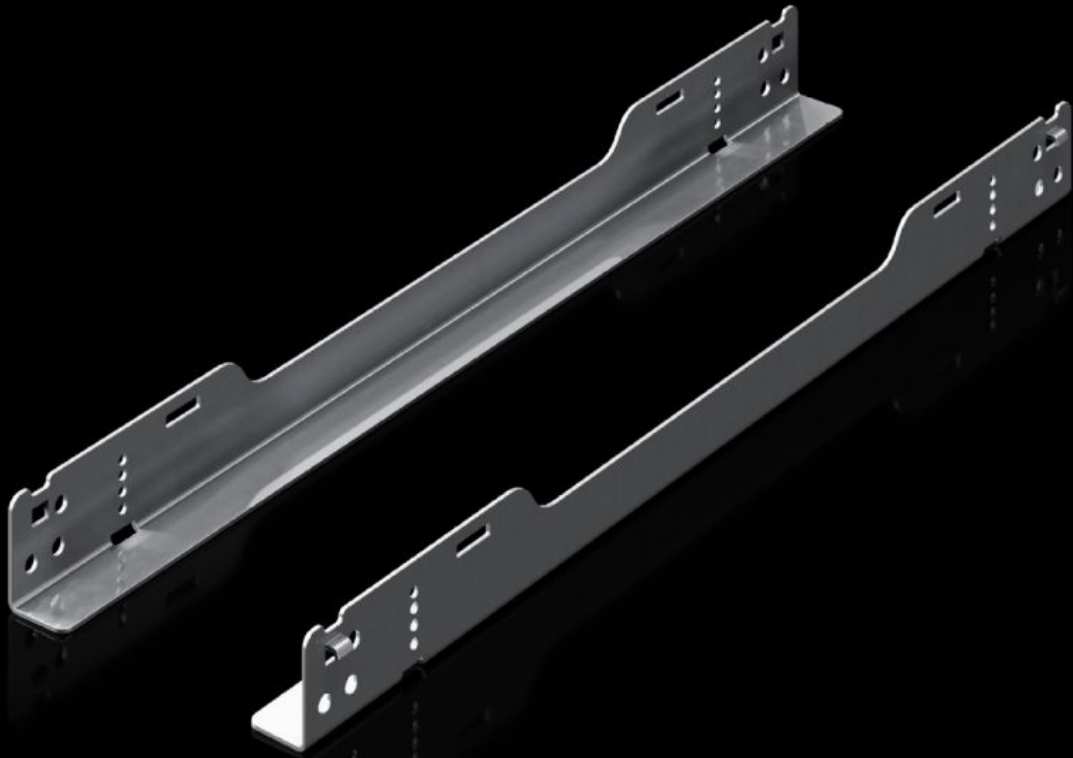


Rittal – The System.

Faster – better – everywhere.



SV 9692.050 Slide Rail

State: 4/3/2026 (Source: rittal.com/us-en)

ENCLOSURES

POWER DISTRIBUTION

CLIMATE CONTROL

IT INFRASTRUCTURE

SOFTWARE & SERVICES

FRIEDHELM LOH GROUP



SV 9692.050 - Slide Rail VX ESS

For holding slide-in batteries.

Features

Model No.	SV 9692.050
Material	Carbon steel, 2 mm, zinc-plated
Supply includes	Incl. punched tape Assembly components
Length	313.9 mm 12.4 "
Load capacity, static	120 kg 1,200 N 264.6 lb.
Suitable for	Enclosure type: VX CS Toptec Depth: 600 mm Enclosure type: VX CS Toptec Depth: 23.6 "
Packaging unit	10 pc(s).
Net weight	3.6 kg
Gross weight	3.7 kg
PCF/VE (cradle-to-gate)	9.09 kg CO2 eq (Cat B)
Information regarding the PCF class	Category B: PCF value (cradle-to-gate) calculated approximately on the basis of the product weight and self-declared
Customs tariff number	73269098
ETIM 9	EC002620
Product description	VX ESS slide rail L: 313.9 mm, for enclosure D: 600 mm