

# Rittal – The System.

Faster – better – everywhere.

## ➤ Seal insert For plastic gland plate, modular and sealing frame, modular – AX 2580.122

Date : Sep 28, 2020

ENCLOSURES

POWER DISTRIBUTION

CLIMATE CONTROL

IT INFRASTRUCTURE

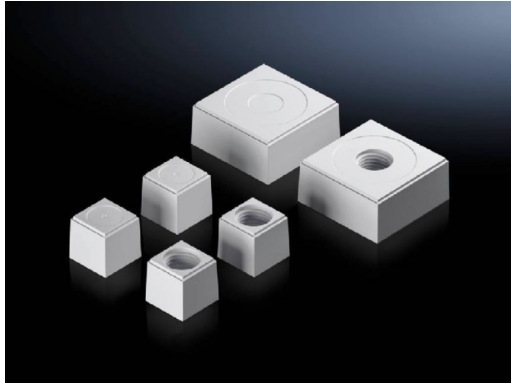
SOFTWARE & SERVICES

FRIEDHELM LOH GROUP



# Seal insert For plastic gland plate, modular and sealing frame, modular – AX 2580.122

created: 28.09.2020 build on [www.rittal.com/uae-en](http://www.rittal.com/uae-en)



## Product description

<b>Design:</b>	Seal insert, large
<b>Description:</b>	The slotted seal inserts, in conjunction with the inlays, allow individual cable entry, even with preassembled cables.
<b>Material:</b>	Plastic
<b>Colour:</b>	RAL 7035

## Product features

<b>Min. cable diameter:</b>	22 mm
<b>Max. cable diameter:</b>	23 mm
<b>Packs of:</b>	5 pc(s).
<b>Copper weight (kg per piece):</b>	0
<b>EAN:</b>	4028177939820
<b>Customs tariff number:</b>	40082900
<b>ETIM 7.0:</b>	EC000441
<b>ETIM 6.0:</b>	EC000441

---

<b>eCl@ss 8.0/8.1:</b>	27149109
<b>eCl@ss 6.0/6.1:</b>	27400604
<b>Product description:</b>	SZ Seal inserts, for cable entry, modular, large, for cable diameter 22 mm

---